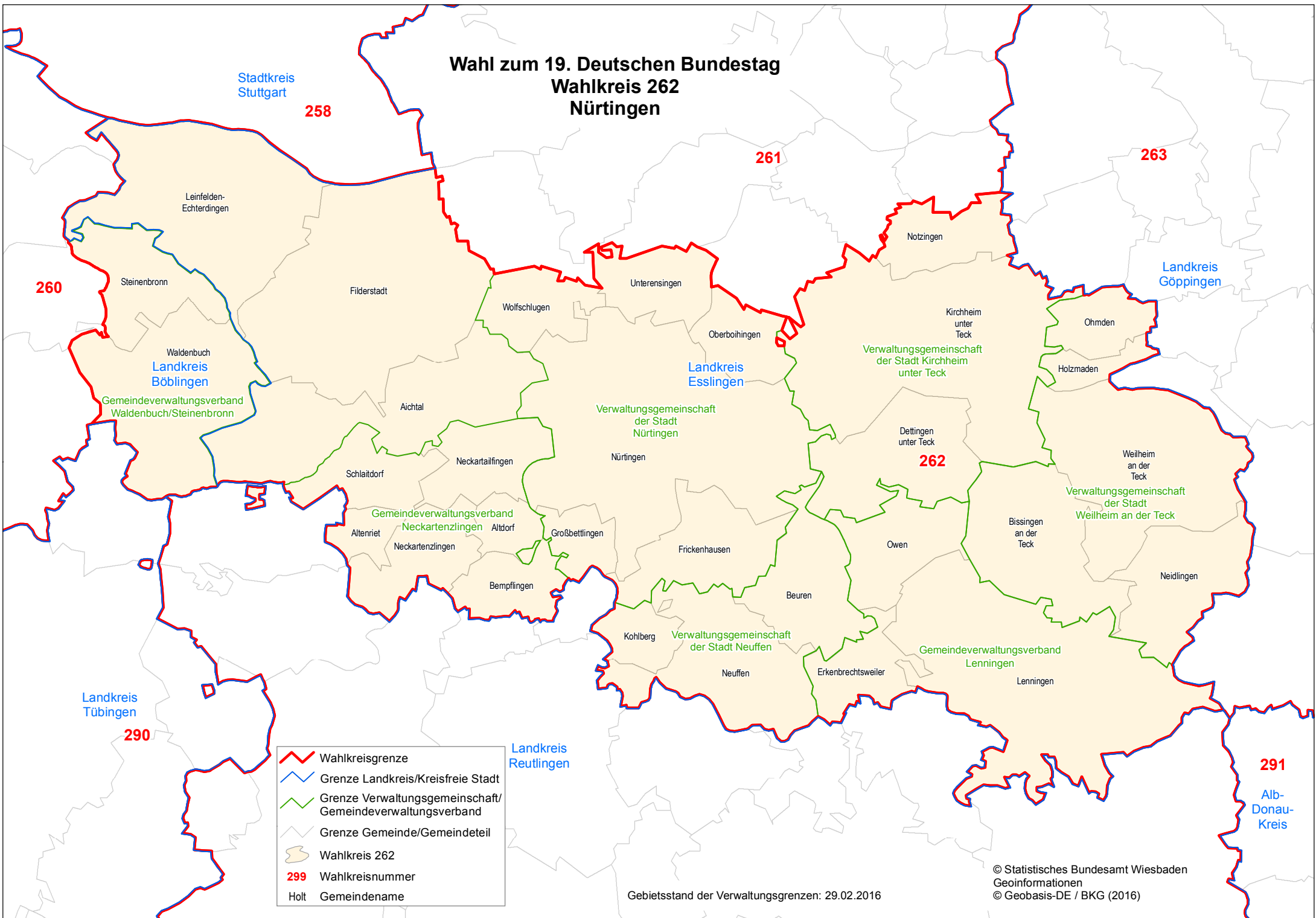








Wahl zum 19. Deutschen Bundestag Wahlkreis 262 Nürtingen



-  Wahlkreisgrenze
-  Grenze Landkreis/Kreisfreie Stadt
-  Grenze Verwaltungsgemeinschaft/
Gemeindeverwaltungsverband
-  Grenze Gemeinde/Gemeindeteil
-  Wahlkreis 262
-  299 Wahlkreisnummer
-  Holt Gemeindegemeinde

Gebietsstand der Verwaltungsgrenzen: 29.02.2016

© Statistisches Bundesamt Wiesbaden
Geoinformationen
© Geobasis-DE / BKG (2016)